

A brief description of terms used in the smoke detector language from the county. You should seek a licensed electrician to install your smoke detectors.

**Hardwired -** Smoke detector must be tied into the house electric system. The same as a light fixture.

**Battery Backup -** A battery is located inside the smoke detector as a precaution if the electric should ever be disrupted. You should test your smoke detectors regularly and replace your batteries at least every six months. Whenever you change your clock for daylight savings change your smoke detector batteries is a good habit to get into.

**Interconnected -** When one smoke detector sounds an alarm the other interconnected smoke detectors will sound as well. When testing be sure to hold in the test button a little longer for the other detectors to signal.

All detectors must be UL Approved.

KIDDE makes a hardwired (AC powered) smoke detector that sends a wireless signal to other smoke detectors to alert. See the link on the web site.

Thank you for choosing MA CArRES for your real estate solution.

2 or 3 apartments  
there must be a hardwired with  
battery backup smoke detector  
outside of sleeping areas in hallway

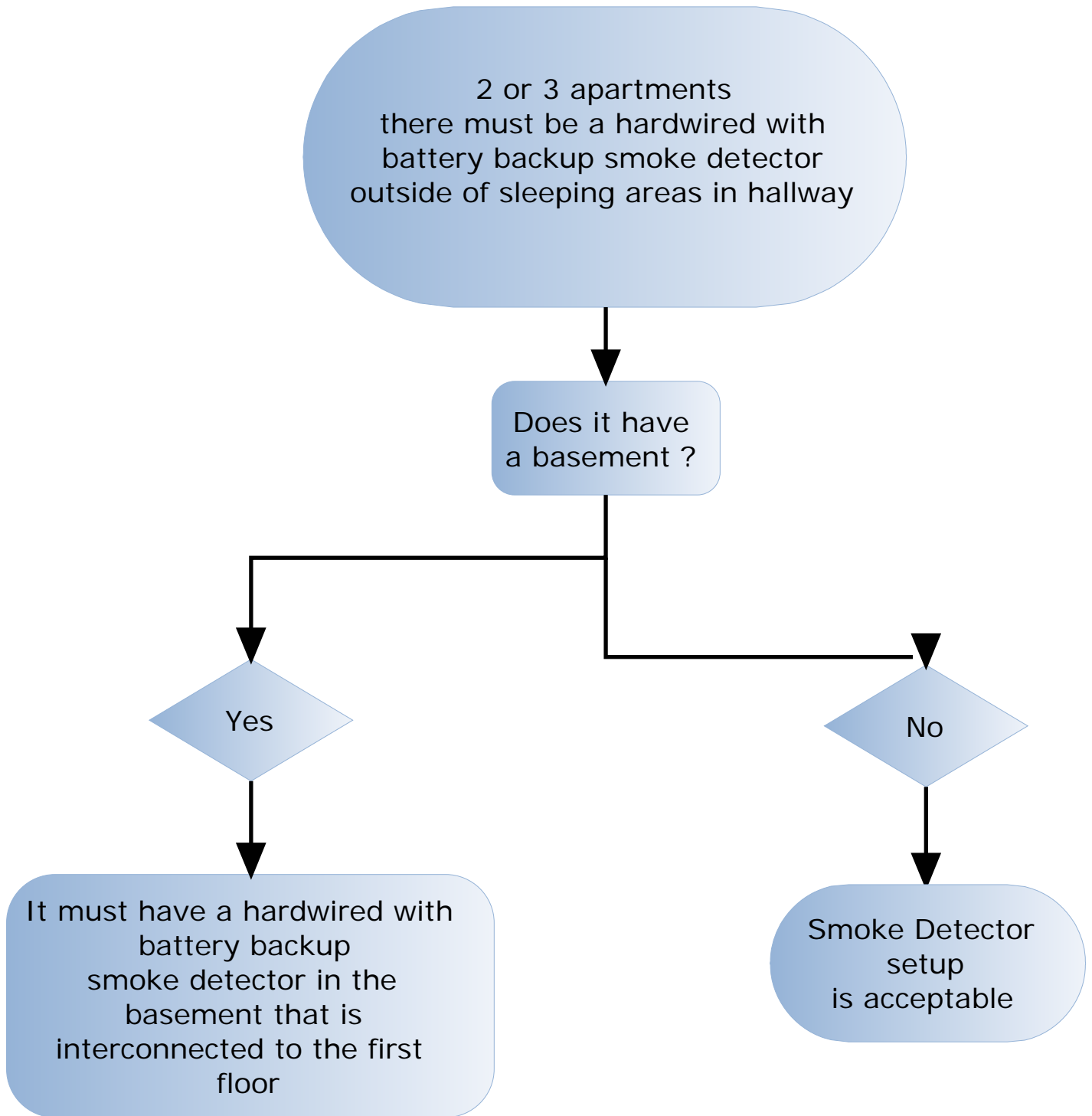
Does it have  
a basement ?

Yes

It must have a hardwired with  
battery backup  
smoke detector in the  
basement that is  
interconnected to the first  
floor

No

Smoke Detector  
setup  
is acceptable

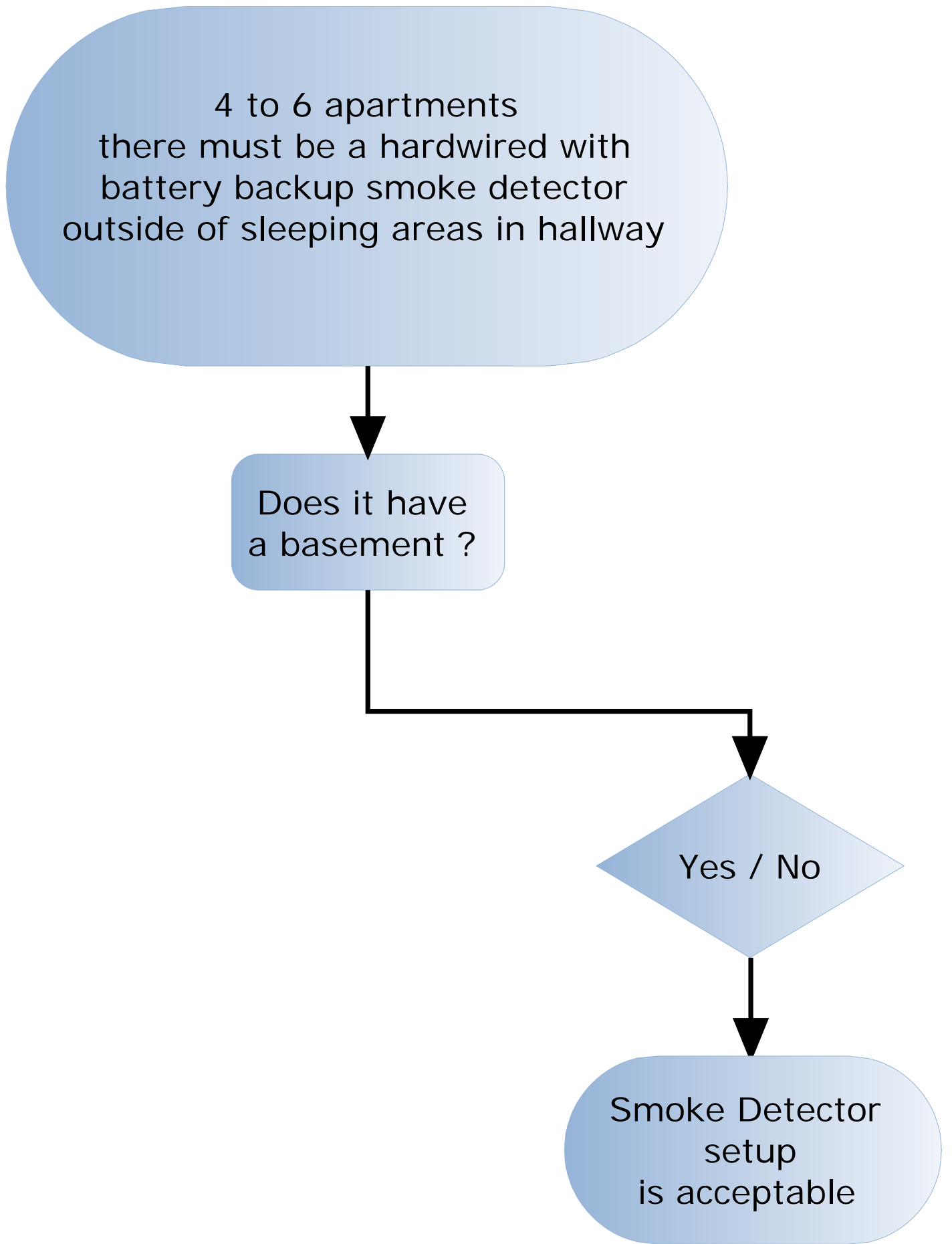


4 to 6 apartments  
there must be a hardwired with  
battery backup smoke detector  
outside of sleeping areas in hallway

Does it have  
a basement ?

Yes / No

Smoke Detector  
setup  
is acceptable



Single Family Homes  
Must have Hardwired with  
battery backup smoke  
detector outside of sleeping  
areas

Does it have  
a basement ?

Yes

It must have a hardwired  
with battery backup  
smoke detector in the  
basement that is  
interconnected to sleeping  
area smoke detector

No

Smoke Detector  
setup  
is acceptable

